



Observing Report for 2013

Presented by Norm Vargas,
telescope operator by night,
machinist by day.

March 24, 2014
Ann Arbor, MI





Observing Report Topics

- Observing statistics
- Nights attempted 2006-2013
- Nights with data 2013
- Nights without data 2013
- Why we didn't collect data
- Weather as a factor in data collection
- Additions to observing reports in 2013
- Observations of an operator



Observing Statistics

- 261 nights attempted
- 182 nights with data, 69.7% success rate
- 78 nights without data
- 6 nights without a report
- Best seeing reported: July 18, 23.8cm mean, 31.1cm 10min. avg., 39.9cm instantaneous.

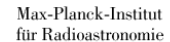
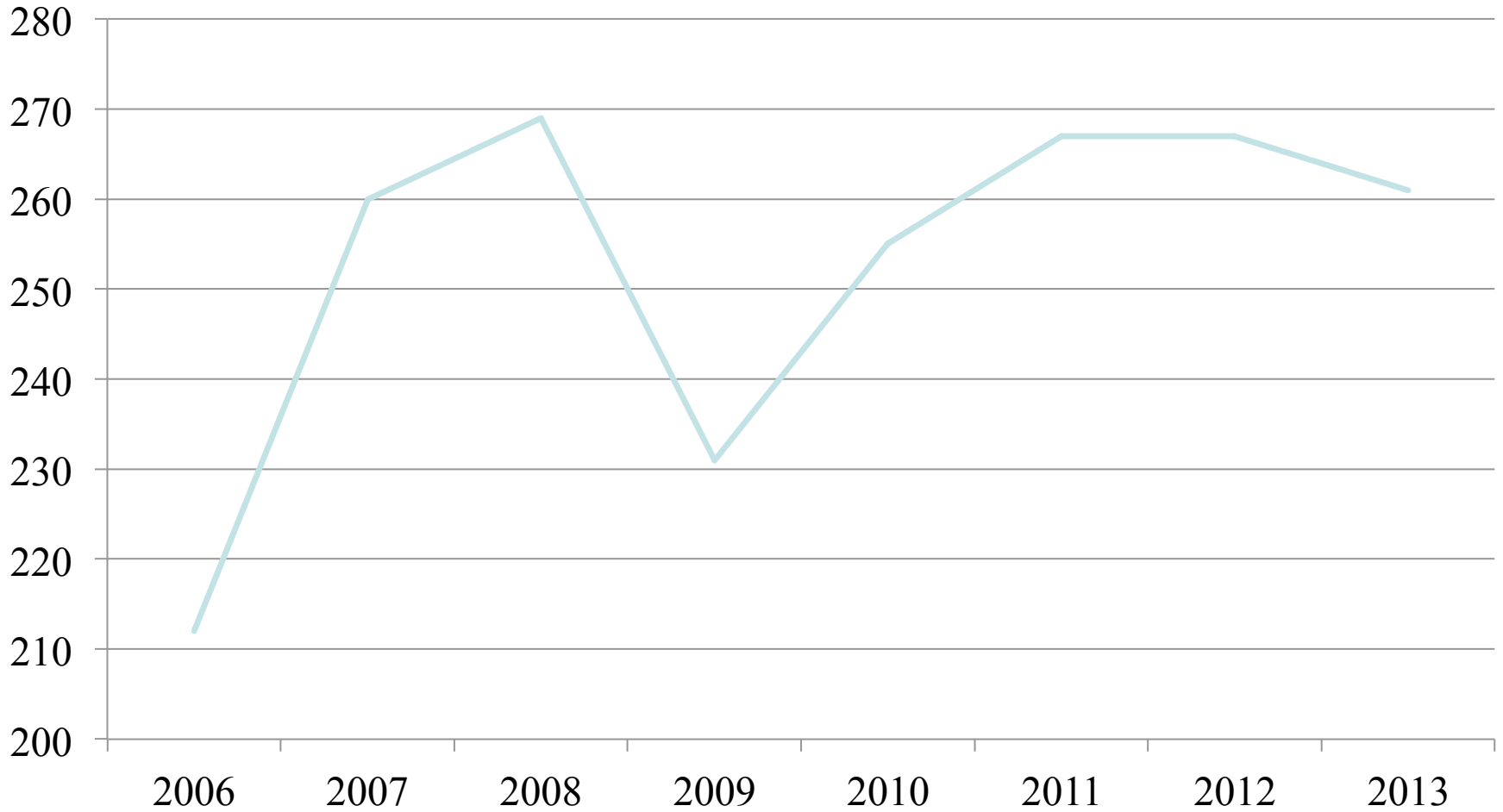


Observing Statistics

- Best stretches of nights with data:
 - 23 nights from June 2-24
 - 20 nights from August 7-26
- Worst stretches of nights with no data:
 - 10 nights from November 16-25
 - 9 nights from December 2-10
- Worst equipment failure: VME crash
 - 5 nights lost from May 28-June 1

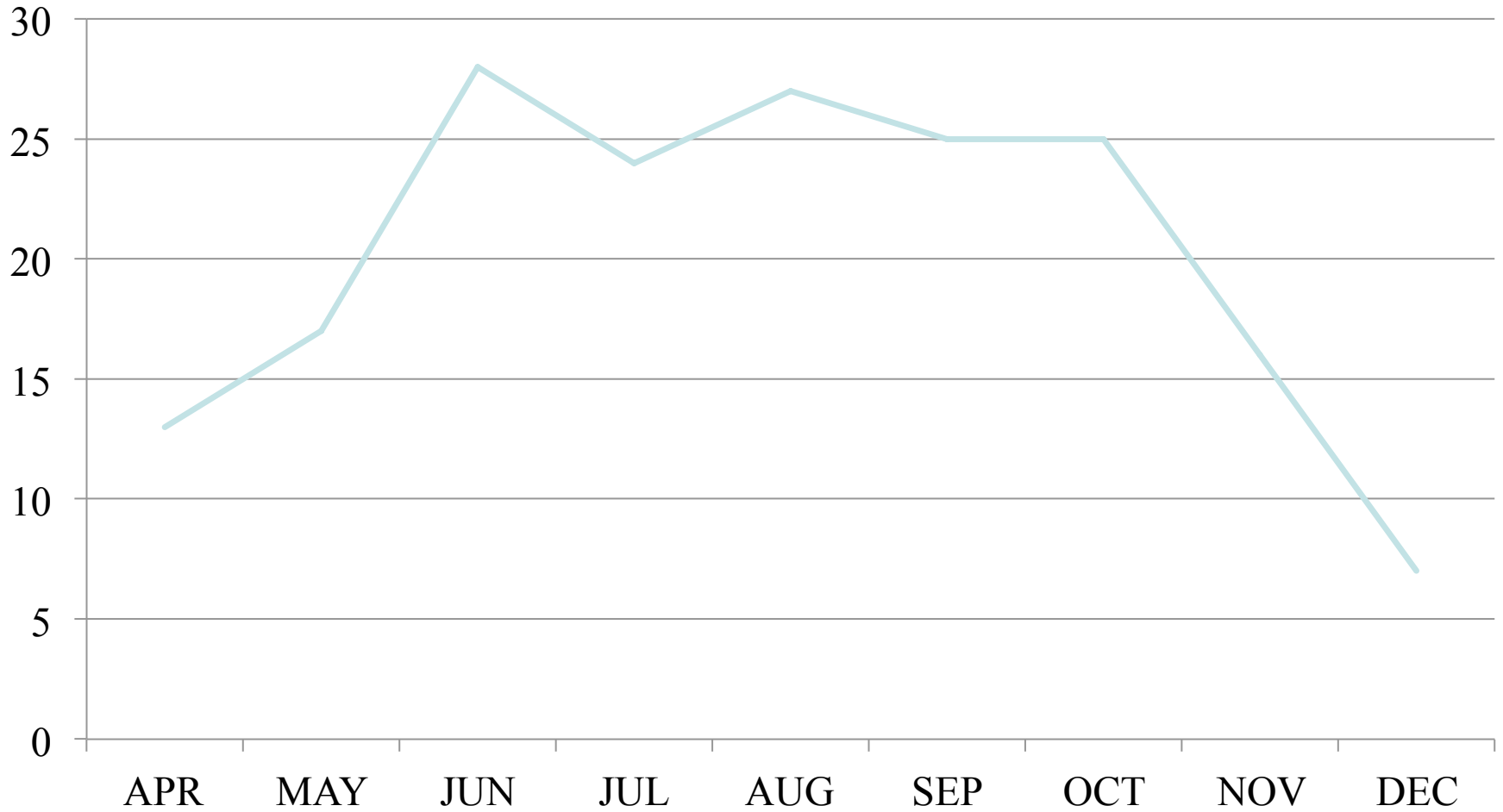


Nights Attempted 2006-2013





Nights with Data 2013

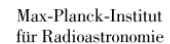
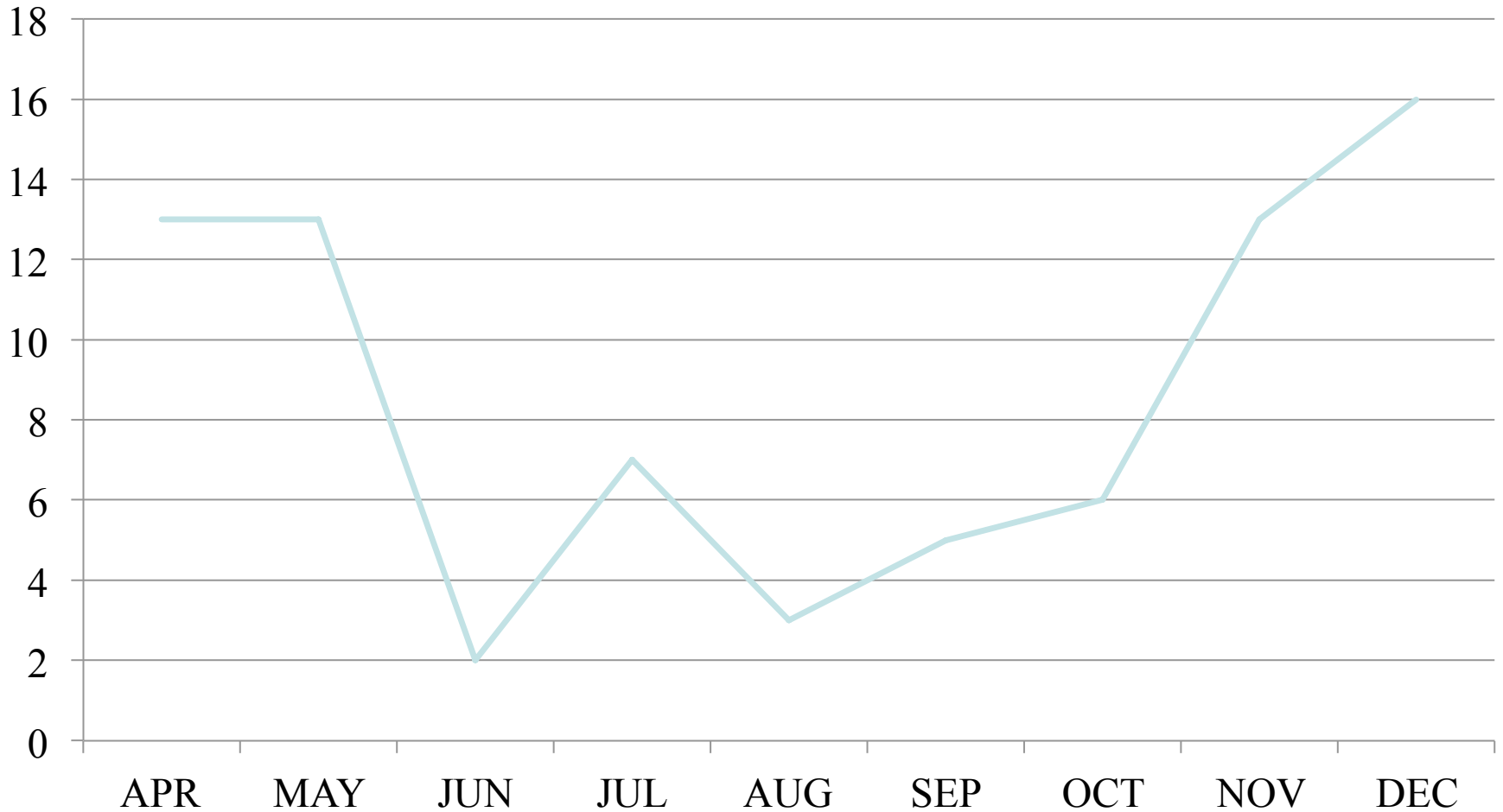


Max-Planck-Institut für Radioastronomie



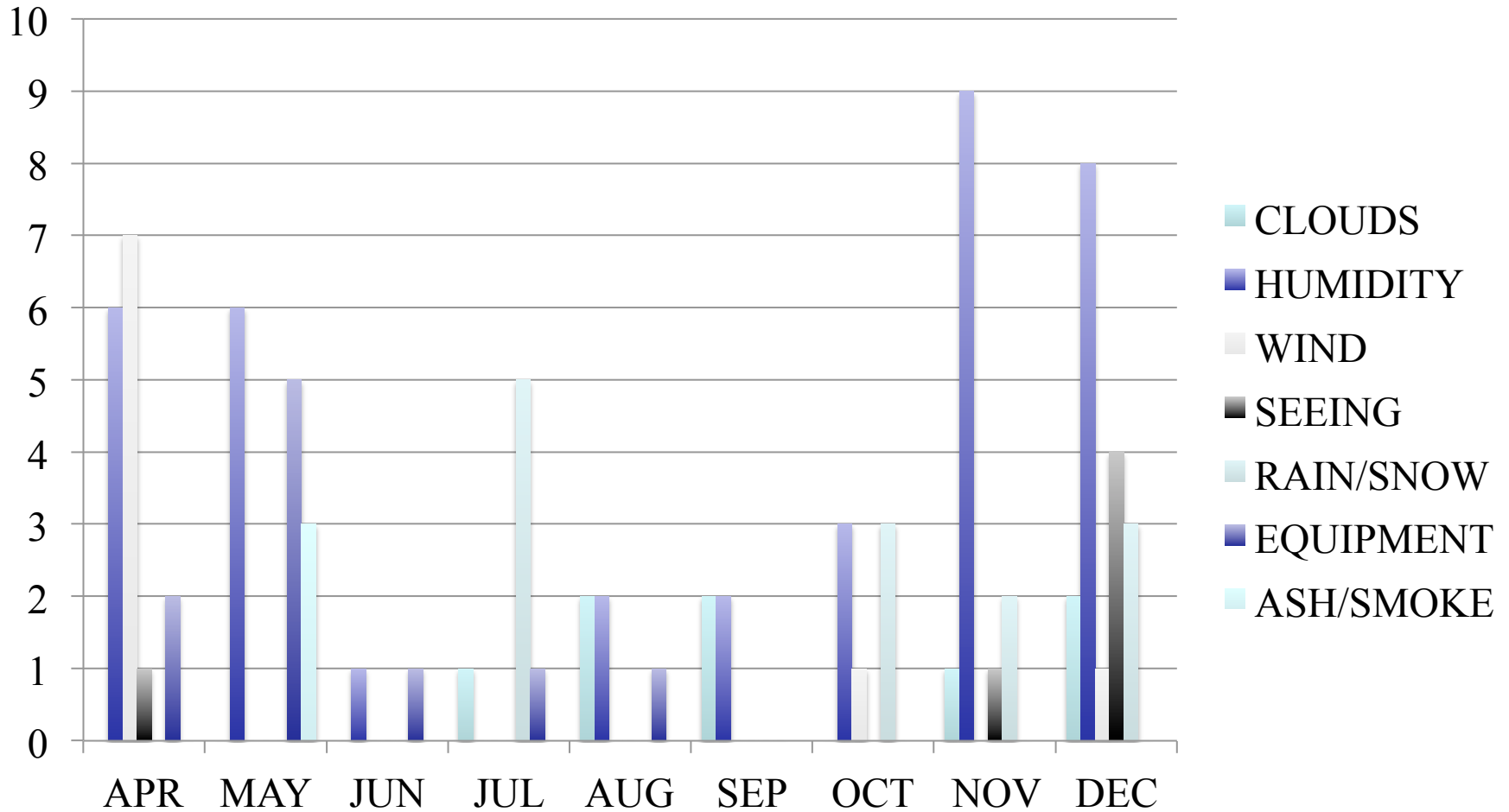


Nights Without Data 2013



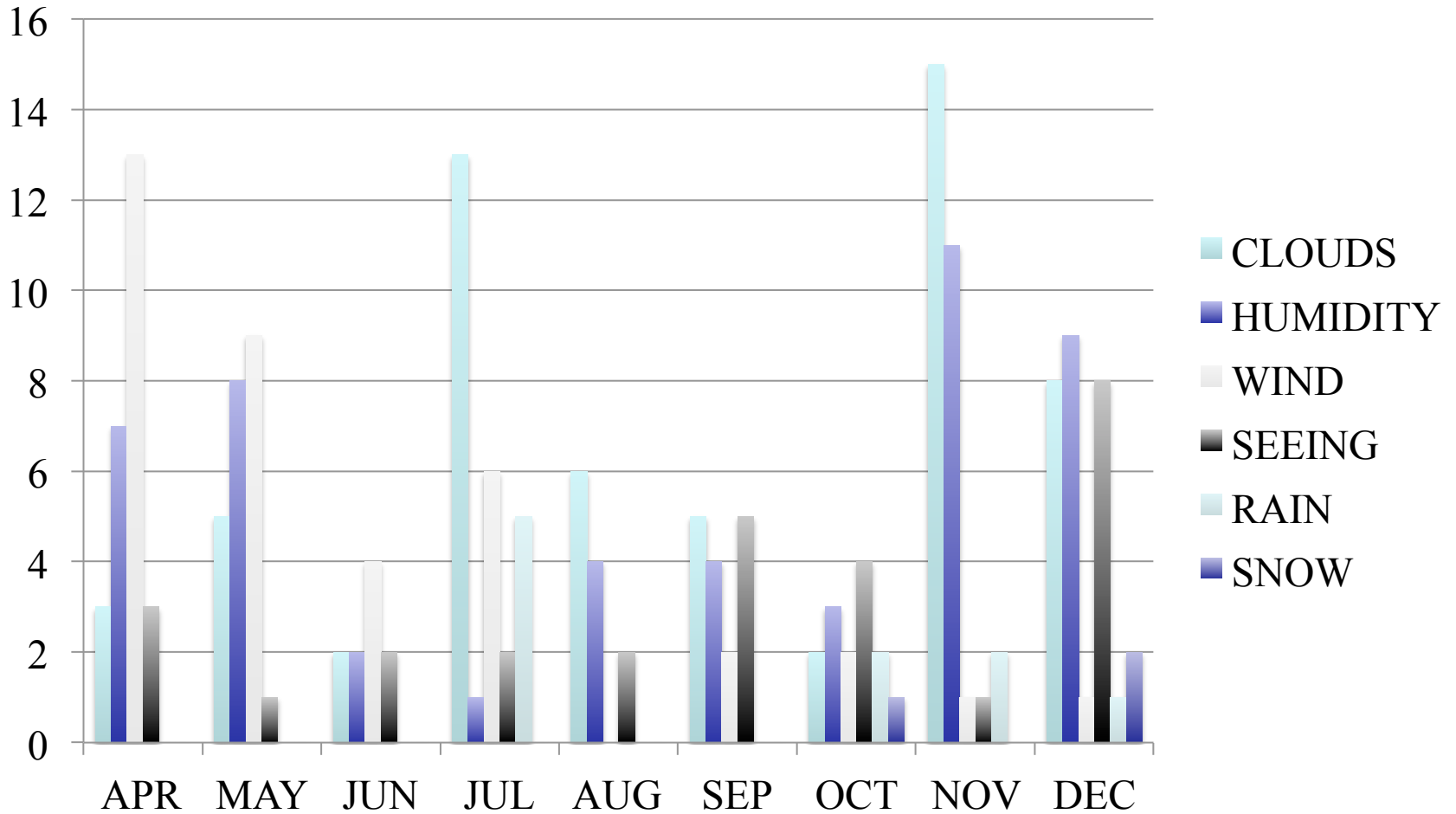


Why We Didn't Collect Data





Weather as a Factor in Data Collection





Additions to Observing Reports

- Observe email account added for consistency of reporting and archiving: early April
- Automated data log added April 1.
- Seeing data added to observing report, giving highs and lows: April 19
- Seeing mean calculation added: June 4
- Weather data added, giving humidity highs, lows, and mean. July 31



My Observations as an Operator

- Nights run best when communications are started early. No Skype check-ins at 30 minutes after sunset.
- Confirm your program is received by your operator before the night you are running. The more we know, the faster, earlier, and more complete your start will be.



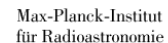
My Observations as an Operator

- Give all relevant info regarding set up such as PoPs needed and if they have been changed or need changing. Surprise PoP changes after the domes have been opened are a waste of time.
- First star whether it's a check star or high SNR calibrator. Searching for fringes with a “bright” object doesn't work well.
- Reference cart desired or used on previous night and known offsets.



Thank You's

- Thank you to all who have been so helpful in training me for this position and sharing advice and tips for smooth operating.
- Thanks also to the PI's who have included me in your papers.





Fin

