



Weather and Seeing Stats and Control System Progress Report

Nils Turner

12 March 2018 / CHARA Winter Meeting, Paris





Weather Station Uptime

	Cum.	2014	2015	2016	2017
E1	95.6	99.7	95.9	95.2	97.3
E2	81.8	62.2	3.4	65.0	96.5
S1	94.6	79.8	94.3	95.1	97.3
S2	93.1	98.5	97.0	93.3	84.5
W1	96.1	97.9	98.2	95.0	97.3
W2	97.9	99.6	98.0	92.1	97.2
L1	67.4	12.9	99.7	99.4	63.1

Table: Weather station uptimes as a percentage of time.



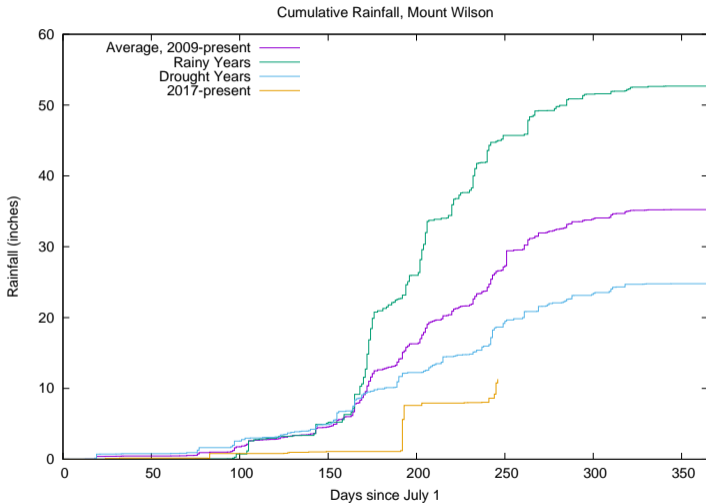
Cross-year Vital Stats

	2012	2013	2014	2015	2016	2017
Measurable Wind	35.6	27.5	11.4	14.3	50.8	63.7
High Wind [†]	0.3	0.3	0.2	0.2	0.3	0.4
High Humidity [‡]	15.6	13.5	16.0	17.5	17.4	18.6

Table: Table entries are percentages of time. Values quoted are the largest of the six bunker weather stations. † High wind is defined as being above 20 kph. ‡ High Humidity is defined as being above 90%.

Rainfall

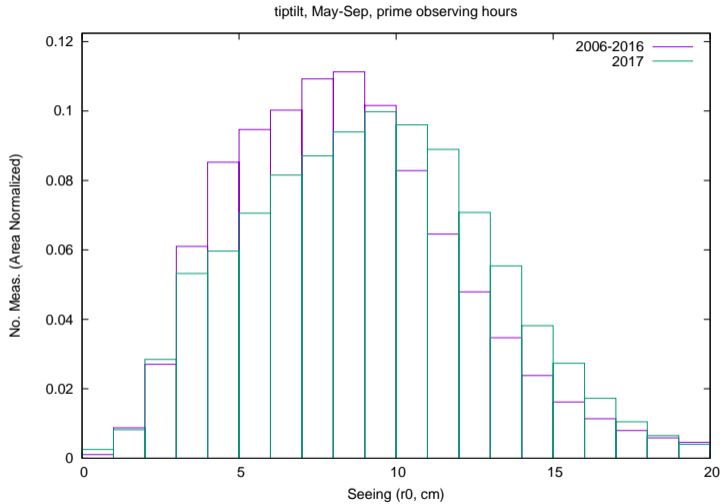
data courtesy of L. Webster





Seeing

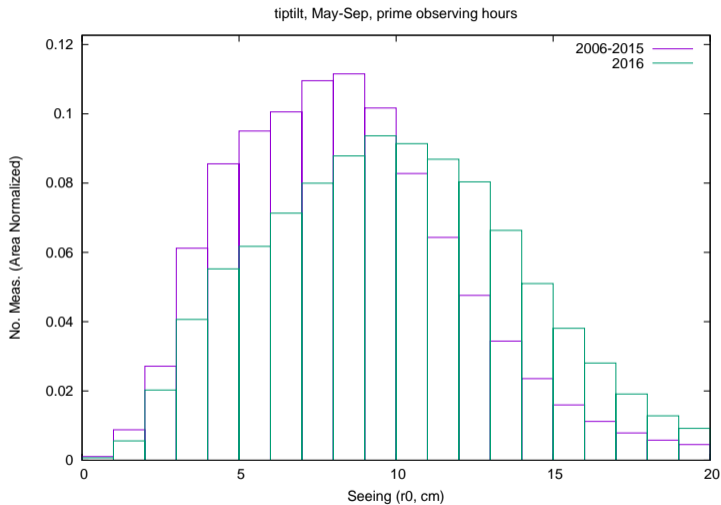
r_0 values





Seeing

r_0 values, last year

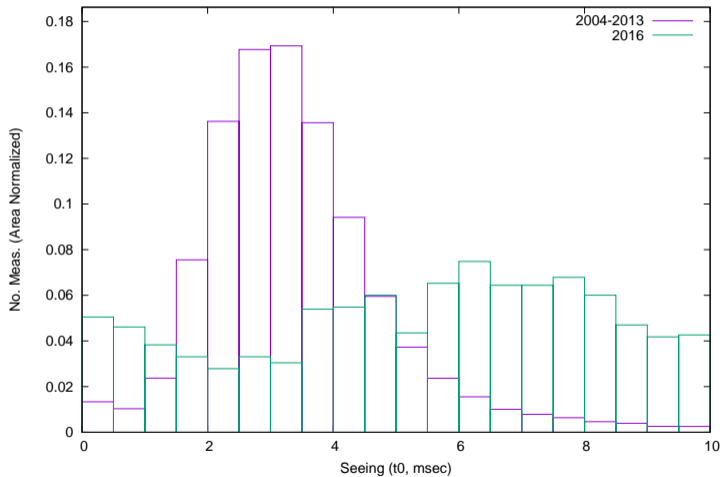




Seeing

t_0 values

2004-2013 data vs. 2016, Classic

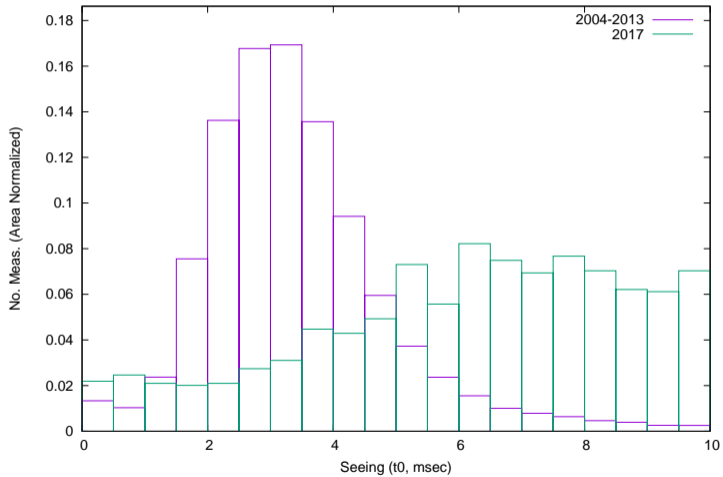




Seeing

t_0 values

2004-2013 data vs. 2017, Classic





Control System

Status

- ▶ Settled on using Ubuntu Studio which uses a 4.13 low latency kernel (should it prove useful)



Control System

Status

- ▶ Settled on using Ubuntu Studio which uses a 4.13 low latency kernel (should it prove useful)
- ▶ ALPAO mirror control requires kernel < 4.8 , while Matrox Radiant Camera Link card requires kernel ≤ 4.4 , so we use the back-ported 4.4 low latency kernel



Control System

Status

- ▶ Settled on using Ubuntu Studio which uses a 4.13 low latency kernel (should it prove useful)
- ▶ ALPAO mirror control requires kernel < 4.8 , while Matrox Radiant Camera Link card requires kernel ≤ 4.4 , so we use the back-ported 4.4 low latency kernel
- ▶ “systemd” issues have been resolved



Control System

Status

- ▶ Settled on using Ubuntu Studio which uses a 4.13 low latency kernel (should it prove useful)
- ▶ ALPAO mirror control requires kernel < 4.8 , while Matrox Radiant Camera Link card requires kernel ≤ 4.4 , so we use the back-ported 4.4 low latency kernel
- ▶ “systemd” issues have been resolved
- ▶ Latest version of Andor camera tool kit is now compatible with 4.4 kernels



Control System

Status

- ▶ Settled on using Ubuntu Studio which uses a 4.13 low latency kernel (should it prove useful)
- ▶ ALPAO mirror control requires kernel < 4.8 , while Matrox Radiant Camera Link card requires kernel ≤ 4.4 , so we use the back-ported 4.4 low latency kernel
- ▶ “systemd” issues have been resolved
- ▶ Latest version of Andor camera tool kit is now compatible with 4.4 kernels
- ▶ Full conversion to Ubuntu Studio should be done by mid-April



Control System

To Do

- ▶ Assess Meltdown/Spectre remedies



Control System

To Do

- ▶ Assess Meltdown/Spectre remedies
 - ▶ patched kernel doesn't work with all the CHARA code



Control System

To Do

- ▶ Assess Meltdown/Spectre remedies
 - ▶ patched kernel doesn't work with all the CHARA code
 - ▶ our hardware is old and slow



Control System

To Do

- ▶ Assess Meltdown/Spectre remedies
 - ▶ patched kernel doesn't work with all the CHARA code
 - ▶ our hardware is old and slow
- ▶ Web interface to actuator (picos, zabers, shutters, etc.) control



Control System

To Do

- ▶ Assess Meltdown/Spectre remedies
 - ▶ patched kernel doesn't work with all the CHARA code
 - ▶ our hardware is old and slow
- ▶ Web interface to actuator (picos, zabers, shutters, etc.) control
- ▶ There must be more tasks I haven't thought of yet



Infrastructure

- ▶ Mount Wilson network converting to gigabit



Infrastructure

- ▶ Mount Wilson network converting to gigabit – potential increased bandwidth from the current 50 Mbps



Infrastructure

- ▶ Mount Wilson network converting to gigabit – potential increased bandwidth from the current 50 Mbps
- ▶ CHARA converting to VoIP phones



Infrastructure

- ▶ Mount Wilson network converting to gigabit – potential increased bandwidth from the current 50 Mbps
- ▶ CHARA converting to VoIP phones – soon to be phones inside the telescopes as well as in the bunkers